

|            |  |
|------------|--|
| Project:   |  |
| Type:      |  |
| Catalog #: |  |



The ECLIPSE SERIES Class 1, Division 2 Explosion Proof Hazardous Location Luminaire is available with a clear tempered glass lens. Typical lighting applications include industrial facilities, oil, gas, painting facilities, manufacturing, and auto service facilities.

### SPECIFICATIONS AND FEATURES

**HOUSING:** Heavy-Duty Die Cast Aluminum Housing

**LISTING AND RATINGS:** ETL Listed for Hazardous Locations Per UL844 as Follows: Class 1, Division 2 Groups A, B, C, D; T4 Temperature Rating, -25°C to +50°C Ambient. Suitable for Wet Locations, IP66 Sealed LED Compartment

**FINISH:** Powdercoat Finish Over a Chromate Conversion Coating.

**LENS:** Clear Tempered Glass Lens

**MOUNTING OPTIONS:** Mountings Include Pendant (Conduit by Others), Ceiling Mount Box, 25° and 90° Wall Mount with Box, 25° and 90° Stanchions, and Adjustable Yoke. Yoke Mount Includes 3' 16/3 SJOOW Yellow Jacketed Cord and Rated Connector. Rated for 6 #12 AWG 90°C for Through Wiring. Mounts Shipped Separately, Field Installed.

**LED:** Aluminum Boards

**WATTAGE:** Array: 56.7w, System: 64w

**DRIVER:** Electronic Driver, 120-277V, 50/60Hz; Less Than 20% THD and PF>0.90. Standard Internal Surge Protection 6kV. 0-10V Dimming Standard for a Dimming Range of 100% to 10%; Dimming Source Current is 150 Microamps.

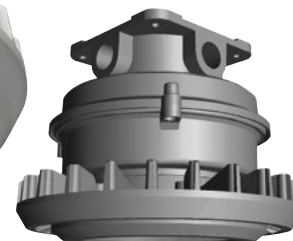
### WARRANTY

5-Year Warranty. See Page 4 for Projected Lumen Maintenance Table.

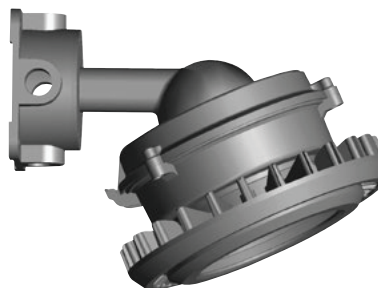
### PENDANT MOUNT



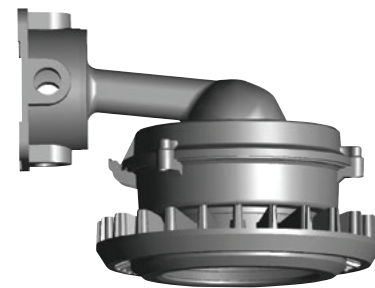
### CEILING MOUNT



### WALL MOUNTS

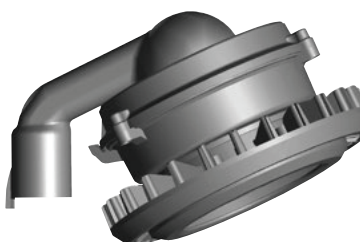


Shown with 25° Wall Mount

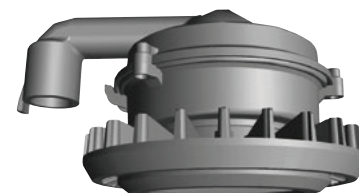


Shown with 90° Wall Mount

### STANCHION MOUNTS

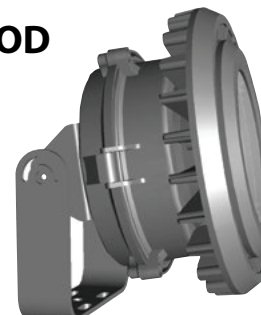


Shown with 25° Stanchion Mount



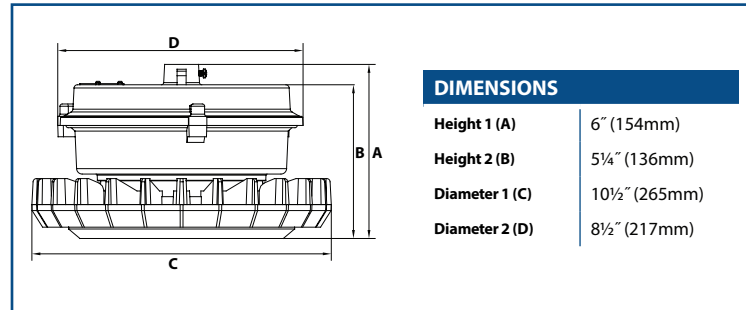
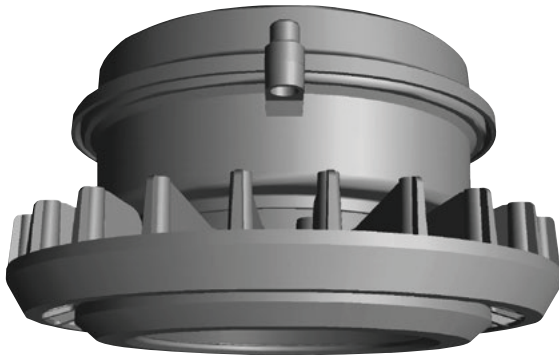
Shown with 90° Stanchion Mount

### FLOOD



Shown with 25° Adjustable Yoke

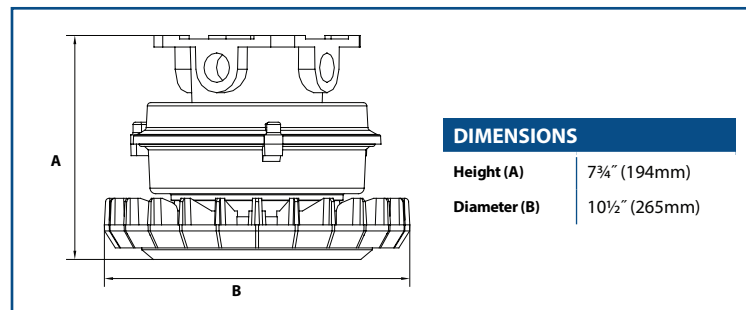
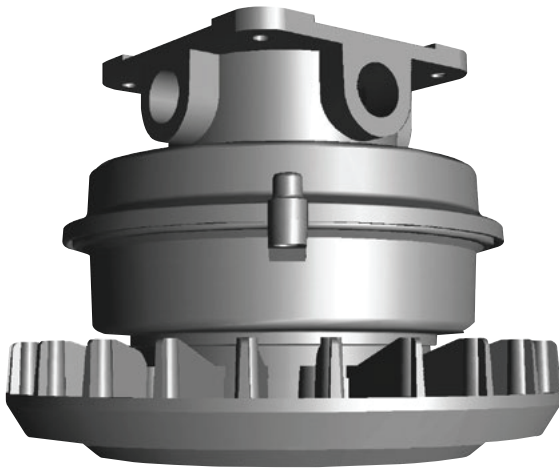
### PENDANT MOUNT



½" Pendant Hub

|                                                            | B      | 57      | LV          | 5K       | TG                              | GR      | D                                         |                        |
|------------------------------------------------------------|--------|---------|-------------|----------|---------------------------------|---------|-------------------------------------------|------------------------|
| Model                                                      | Optics | Wattage | Driver      | CCT      | Lens                            | Color   | Mount                                     | Options                |
| ECLIPSE<br>Hazardous Location<br>Explosion Proof Luminaire | B=Wide | 57=57w  | LV=120-277V | 5K=5000K | TG=Clear Tempered<br>Glass Lens | GR=Gray | D=Pendant<br>Mount (Conduit<br>by Others) | SP=Surge<br>Protection |

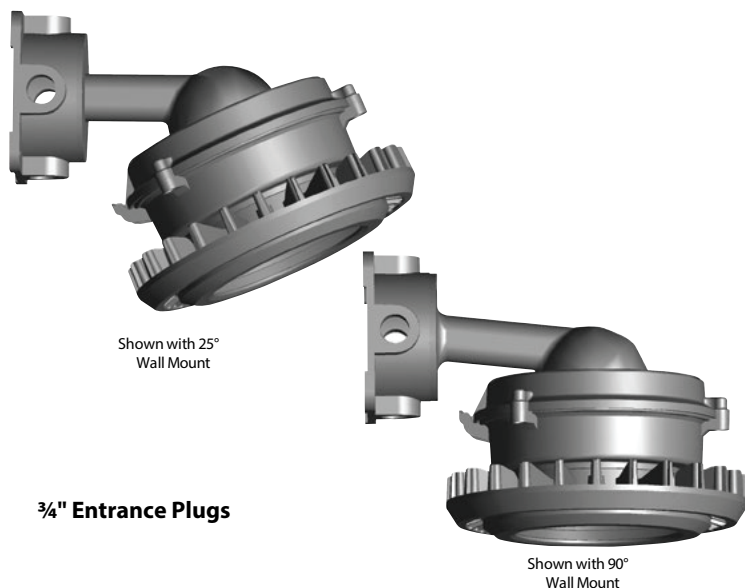
### CEILING MOUNT



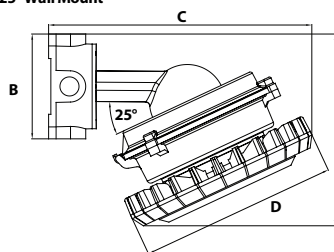
¾" Entrance Plugs

|                                                            | B      | 57      | LV          | 5K       | TG                              | GR      | Q               |                        |
|------------------------------------------------------------|--------|---------|-------------|----------|---------------------------------|---------|-----------------|------------------------|
| Model                                                      | Optics | Wattage | Driver      | CCT      | Lens                            | Color   | Mount           | Options                |
| ECLIPSE<br>Hazardous Location<br>Explosion Proof Luminaire | B=Wide | 57=57w  | LV=120-277V | 5K=5000K | TG=Clear Tempered<br>Glass Lens | GR=Gray | Q=Ceiling Mount | SP=Surge<br>Protection |

### WALL MOUNTS



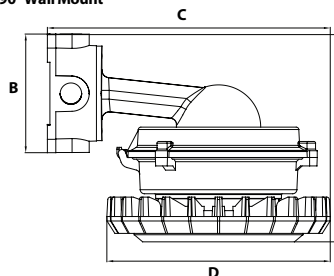
25° Wall Mount



#### DIMENSIONS

|              |                 |
|--------------|-----------------|
| Height 1 (A) | 10" (256mm)     |
| Height 2 (B) | 5 1/2" (140mm)  |
| Length (C)   | 13 3/4" (352mm) |
| Width (D)    | 10 1/2" (265mm) |

90° Wall Mount

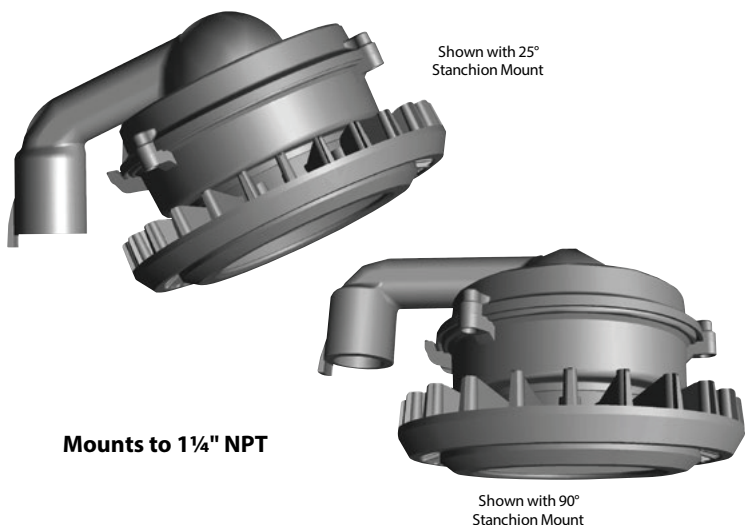


#### DIMENSIONS

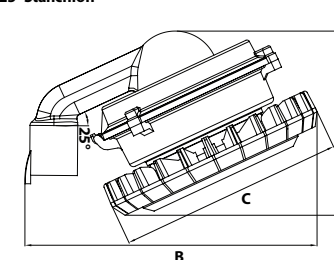
|              |                 |
|--------------|-----------------|
| Height 1 (A) | 9 3/4" (246mm)  |
| Height 2 (B) | 5 1/2" (140mm)  |
| Length (C)   | 13 3/4" (336mm) |
| Width (D)    | 10 1/2" (265mm) |

|                                                            | B      | 57      | LV          | 5K       | TG                              | GR      |                                          |                        |
|------------------------------------------------------------|--------|---------|-------------|----------|---------------------------------|---------|------------------------------------------|------------------------|
| Model                                                      | Optics | Wattage | Driver      | CCT      | Lens                            | Color   | Mount                                    | Options                |
| ECLIPSE<br>Hazardous Location<br>Explosion Proof Luminaire | B=Wide | 57=57w  | LV=120-277V | 5K=5000K | TG=Clear Tempered<br>Glass Lens | GR=Gray | W25=25° Wall Mount<br>W90=90° Wall Mount | SP=Surge<br>Protection |

### STANCHION MOUNTS



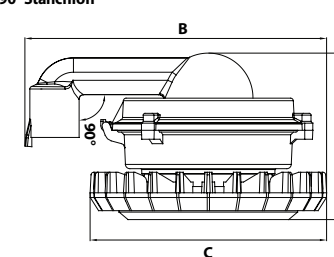
25° Stanchion



#### DIMENSIONS

|              |                 |
|--------------|-----------------|
| Height 1 (A) | 8 1/2" (216mm)  |
| Length (B)   | 13 1/2" (343mm) |
| Width (C)    | 10 1/2" (265mm) |

90° Stanchion

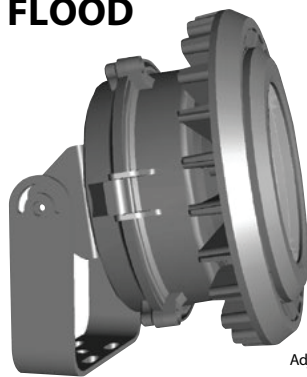


#### DIMENSIONS

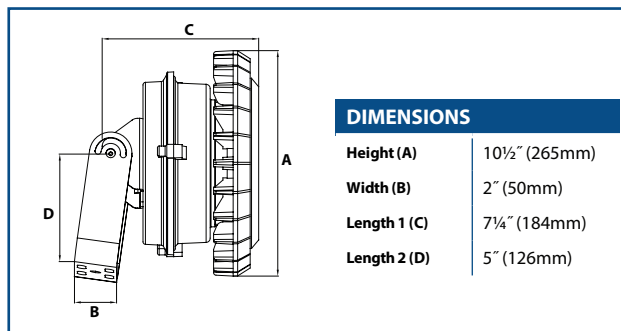
|              |                 |
|--------------|-----------------|
| Height 1 (A) | 7 1/4" (186mm)  |
| Length (B)   | 13 1/4" (338mm) |
| Width (C)    | 10 1/2" (265mm) |

|                                                            | B      | 57      | LV          | 5K       | TG                              | GR      |                                        |                        |
|------------------------------------------------------------|--------|---------|-------------|----------|---------------------------------|---------|----------------------------------------|------------------------|
| Model                                                      | Optics | Wattage | Driver      | CCT      | Lens                            | Color   | Mount                                  | Options                |
| ECLIPSE<br>Hazardous Location<br>Explosion Proof Luminaire | B=Wide | 57=57w  | LV=120-277V | 5K=5000K | TG=Clear Tempered<br>Glass Lens | GR=Gray | S25=25° Stanchion<br>S90=90° Stanchion | SP=Surge<br>Protection |

### FLOOD

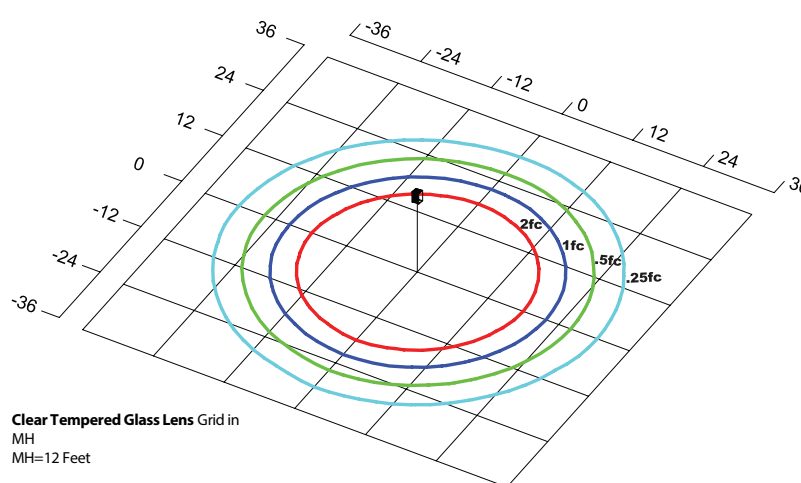
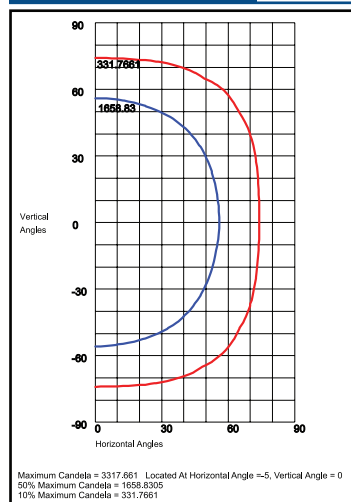


Shown with  
Adjustable Yoke



|                                                            | B      | 57      | LV          | 5K       | TG                              | GR      | E                 |                        |
|------------------------------------------------------------|--------|---------|-------------|----------|---------------------------------|---------|-------------------|------------------------|
| Model                                                      | Optics | Wattage | Driver      | CCT      | Lens                            | Color   | Mount             | Options                |
| ECLIPSE<br>Hazardous Location<br>Explosion Proof Luminaire | B=Wide | 57=57w  | LV=120-277V | 5K=5000K | TG=Clear Tempered<br>Glass Lens | GR=Gray | E=Adjustable Yoke | SP=Surge<br>Protection |

#### PHOTOMETRIC DATA



#### Clear Tempered Glass Lens

#### PHOTOMETRIC PERFORMANCE

| LED Board Watts  | Drive Current (mA) | Input Watts | Optics                        | 5000 CCT 80 CRI |     |
|------------------|--------------------|-------------|-------------------------------|-----------------|-----|
|                  |                    |             |                               | Lumens          | LPW |
| 57w (Clear Lens) | 175                | 64          | F 110°H x 110°V, NEMA 7H x 7V | 8,957           | 140 |

#### PROJECTED LUMEN MAINTENANCE

| Data shown for 5000 CCT               |             |         | Compare to MH |            |             |                        |
|---------------------------------------|-------------|---------|---------------|------------|-------------|------------------------|
| TM-21-11                              | Input Watts | Initial | 25,000 Hrs    | 50,000 Hrs | 100,000 Hrs | Calculated L70 at 25°C |
| L70 Lumen Maintenance at 25°C / 77°F  | 64          | 1.00    | 0.96          | 0.92       | 0.84        | 183,000                |
| TM-21-11                              | Input Watts | Initial | 25,000 Hrs    | 50,000 Hrs | 100,000 Hrs | Calculated L80 at 40°C |
| L80 Lumen Maintenance at 50°C / 104°F | 64          | 1.00    | 0.93          | 0.86       | 0.71        | 105,000                |
| TM-21-11                              | Input Watts | Initial | 25,000 Hrs    | 50,000 Hrs | 100,000 Hrs | Calculated L80 at 40°C |
| L80 Lumen Maintenance at 40°C / 104°F | 64          | 1.00    | 0.94          | 0.88       | 0.75        | 81,000                 |

#### NOTES:

- Projected per IESNA TM-21-11. Data references the extrapolated performance projections for the 175mA base model in a 25°C ambient, based on 10,000 hours of LED testing per IESNA LM-80-08.
- Compare to MH box indicates suggested Light Loss Factor (LLF) to be used when comparing to Metal Halide (MH) systems.